

# ELM Systems

## Electronic Locking & Monitoring



Locking  
Systems

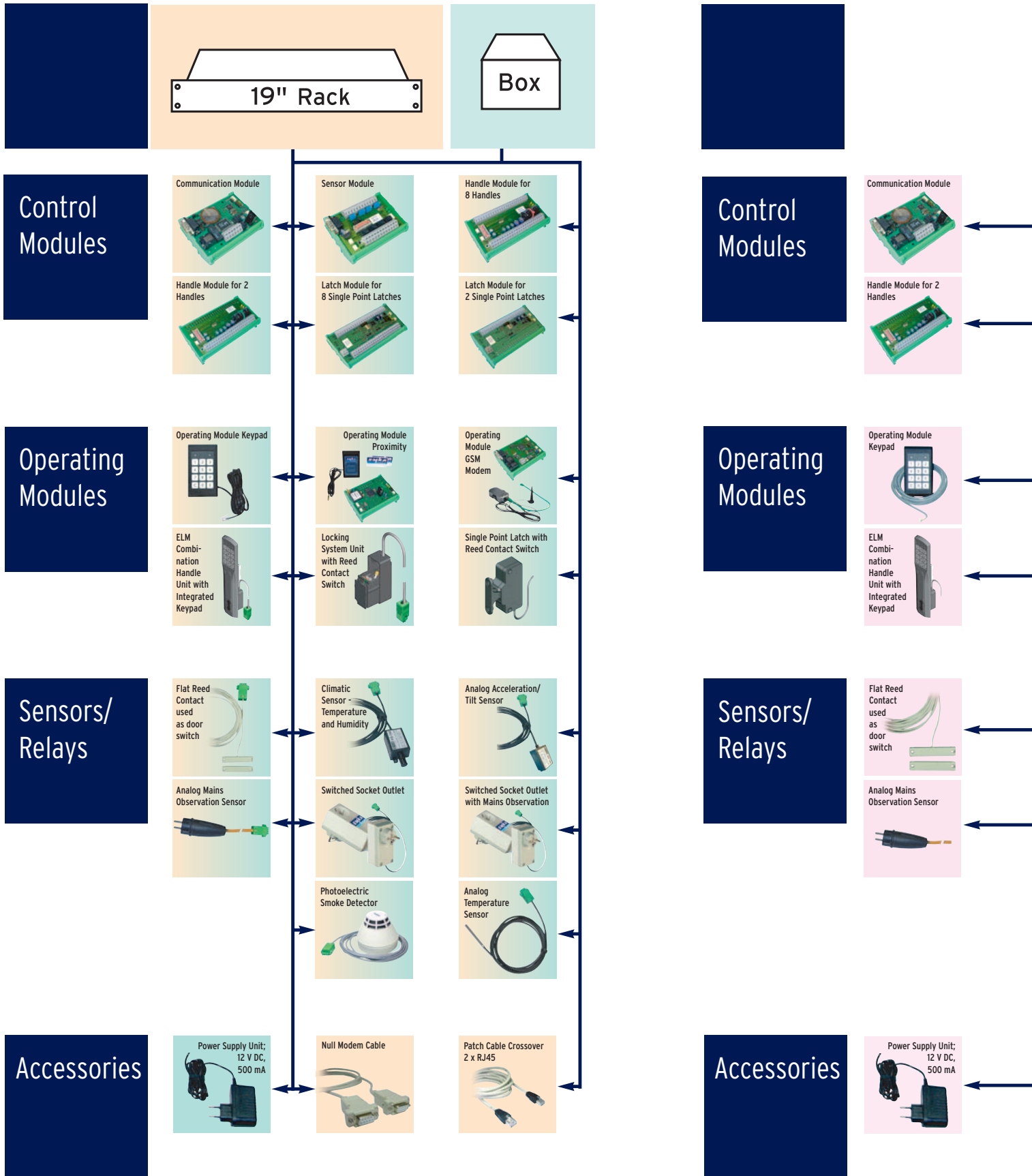
Access  
Control

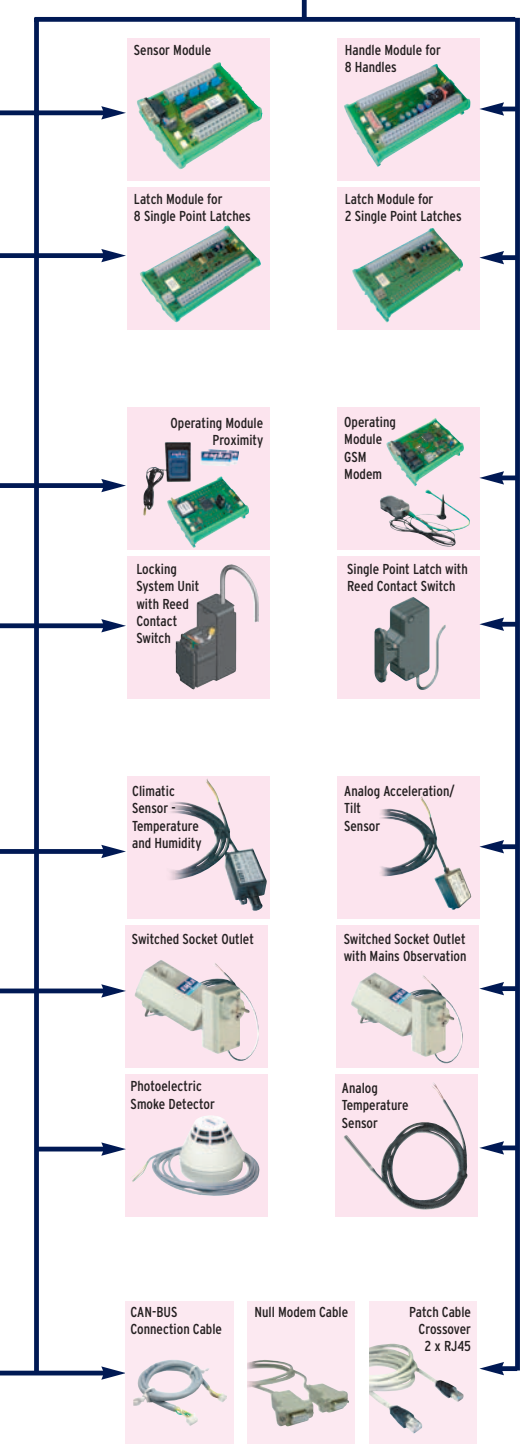
Controlling &  
Monitoring

Sensors &  
Relays



# ELM System Overview





Versions	19" Rack			Box	KIT
	Basic 3000-U49**	Standard 3000-U50*	Extended 3000-U53*	encapsulated version	components and assemblies
<b>Control Modules</b>					
Communication Module	3000-U14-01	○	●	●	3000-U14-02 3000-U14-00
Sensor Module	3000-U13-01	○	●	●	3000-U13-02 3000-U13-00
Handle Module for 8 Handles	3000-U11-01	○	●	●	3000-U11-02 3000-U11-00
Handle Module for 2 Handles	3000-U12-01	○	○	○	3000-U12-02 3000-U12-00
Latch Module for 8 Single Point Latches	3000-U32-01	○	○	○	3000-U32-02 3000-U32-00
Latch Module for 2 Single Point Latches	3000-U33-01	○	○	○	3000-U33-02 3000-U33-00
<b>Operating Modules</b>					
Operating Module Keypad	3000-U08-01	○	○	○	3000-U08-01 3000-U08-00
Operating Module Proximity	3000-U09-01	○	○	●	3000-U09-02 3000-U09-00
Operating Module GSM Modem	3000-U10-01	○	○	○	3000-U10-02 3000-U10-00
ELM Comb. Handle Unit w. Integr. Keypad	2100-U158-01	○	○	○	2100-U158-01 2100-U158-00
Locking System Unit w. Reed Contact Switch	3000-U06-01	○	○	○	3000-U06-01 3000-U06-00
Single Point Latch w. Reed Contact Switch	3000-U30-01	○	○	○	3000-U30-01 3000-U30-00
<b>Sensors/Relays</b>					
Flat Reed Contact used as door switch	3000-U35-01	○	○	○	3000-U35-01 3000-U35-00
Climatic Sensor - Temperature a. Humidity	3000-U25-01	○	○	○	3000-U25-01 3000-U25-00
Analog Acceleration/Tilt Sensor	3000-U38-01	○	○	○	3000-U38-01 3000-U38-00
Analog Temperature Sensor	3000-U39-01	○	○	○	3000-U39-01 3000-U39-00
Analog Mains Observation Sensor	3000-U40-01	○	○	○	3000-U40-01 3000-U40-00
Switched Socket Outlet	3000-U41-01	○	○	○	3000-U41-01 3000-U41-00
Switched Socket Outlet w. Mains Observation	3000-U42-01	○	○	○	3000-U42-01 3000-U42-00
Photoelectric Smoke Detector	3000-U34-01	○	○	○	3000-U34-01 3000-U34-00
<b>Accessories</b>					
Power Supply Unit; 12 V DC, 500 mA		●	●	●	3000-03-02 3000-03-00
CAN Bus Connection Cable 0,2m		n/a	n/a	n/a	n/a 3000-U17
CAN Bus Connection Cable 3,0m		n/a	n/a	n/a	n/a 3000-U18
CAN Bus Connection Cable 5,0m		n/a	n/a	n/a	n/a 3000-U19
Null Modem Cable	3000-U29	○	○	○	n/a 3000-U29
Patch Cable Crossover 2 x RJ45	3000-U28	○	○	○	n/a 3000-U28

\* Completely assembled and wired.  
 \*\* Assembled and wired according to customer's requirements (max. 6 modules per rack). Networks are constructed by connecting several racks.  
 ● = standard  
 ○ = optional  
 n/a = not applicable

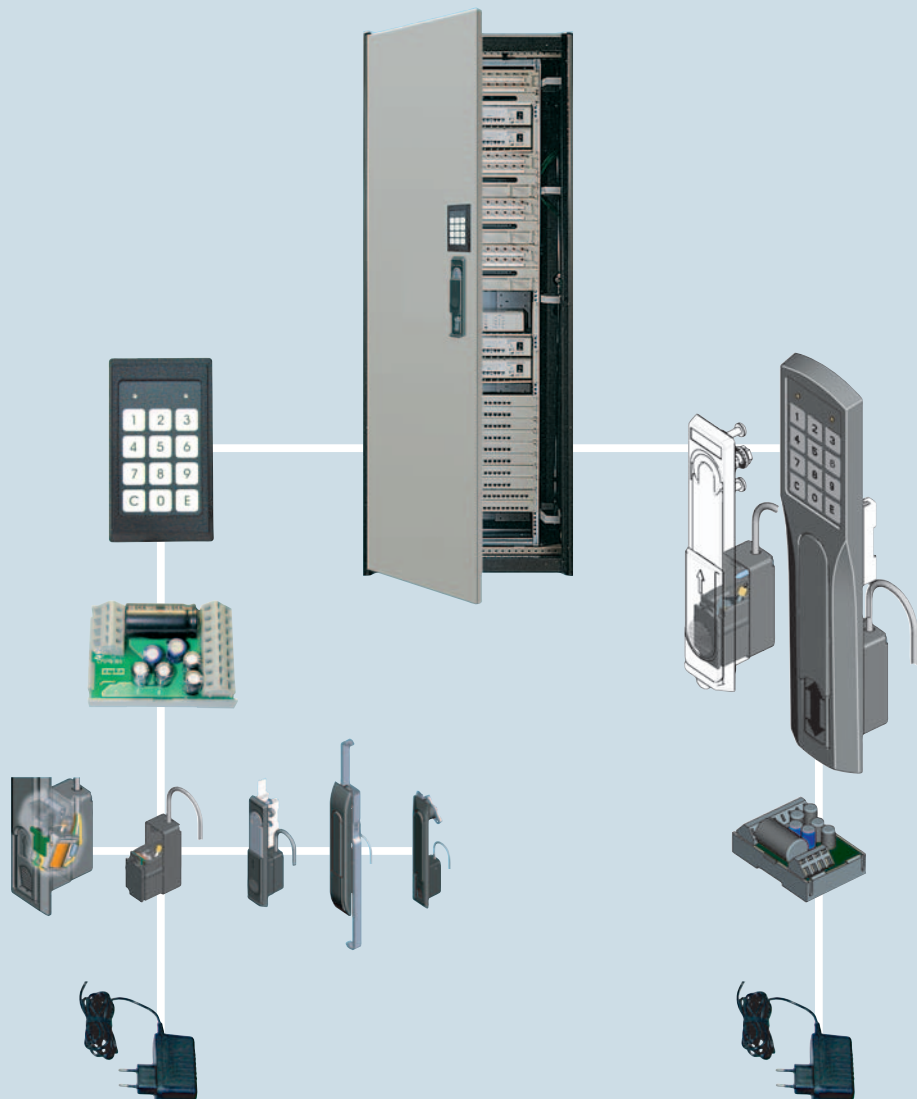
## Stand-alone Solutions

The Stand-alone system is an economical electronic locking system for cabinets with up to two doors.

It is suitable for applications which do not require an activity log or remote operation and management.

The opening of a handle is effected via a keypad by input of a code number. For the opening of every handle the system maintains up to 5 different code numbers. The administration of the code numbers is carried out directly at the keypad and requires authorization by input of a special "master code number".

The Stand-alone system consists of a Keypad Module and a Control Module. The Control Module provides the necessary electrical energy for opening the handles. Keypad Module and handles are available both as individual components and as an integrated unit.





# Locking - Protecting - Monitoring



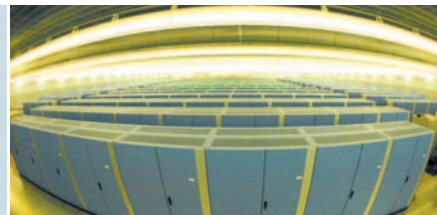
Application	Requirements	EMKA Solution
Enclosure Manufacturer	Locking/entry & environmental control options	Modular system is ideal for adding over temp. alarms & fan controls etc. Many unlocking options: PINs, prox cards, etc.
Data Center / secure building Architects	Integrated security systems	Easily integrated into a building system Building prox cards are compatible
Colocation center customers	100% uptime	Elimination of harmful "hot spots," early warnings, alarms
	Zero possibility of data theft	Alarms for forced intrusion, logging of entries, "at-a-glance" or passive monitoring, keypad has 1,000,000 combinations
	Easy termination of user rights	One click cancellation of prox cards & PINs
Colocation center operators	Passive monitoring	ELMwatcher software sends emails & text messages, etc.
	Easy management and trouble shooting	Windows® based software is intuitive & shows anomalies clearly with supporting detail
Multi-drawer secure cabinet maker	Monitoring and logging of drawer activity	Unlocking, entry & user status is recorded in real time
Kiosk manufacturers	Remote unlocking, security	Operates from LAN terminal, easily changed PINs
Industrial Equipment	Safety	Access limited to authorized personnel



Monitoring & alarms for entry, forced entry, and environmental conditions.



The "at-a-glance" monitoring screens give immediate notice of anomalies.



Controlling environment e.g. temperature.

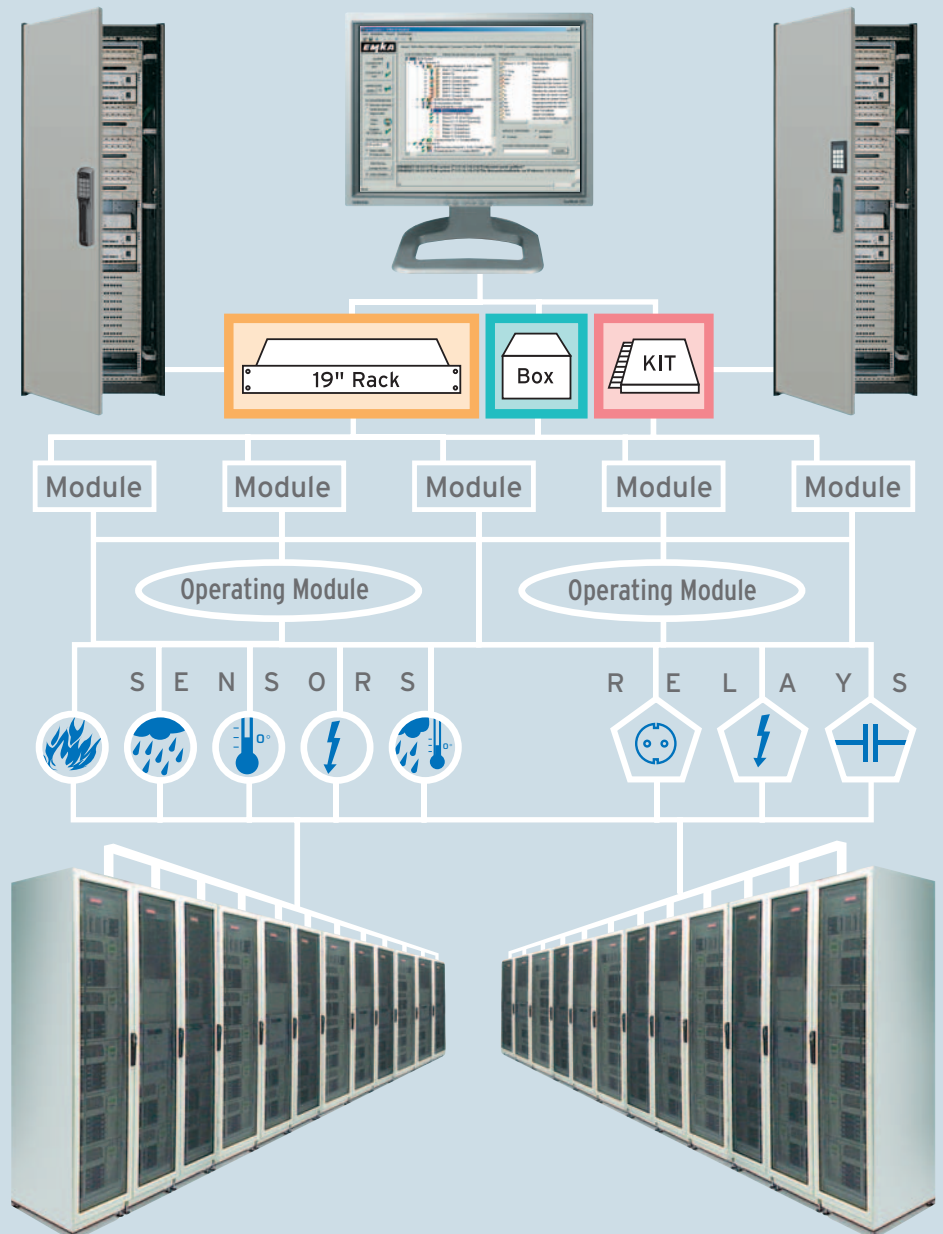
# Program 3000: Network Solutions

EMKA offers complete electronic systems including all controls & software, electro-mechanical actuators, and handles. This guarantees compatibility and problem free integration. Most systems are modular, allowing easy expansion and modification as customers' needs change. The Windows® compatible software allows simple installation, monitoring, control and access authorization changes.

Optional 19" rack units are factory wired with the selected modules. Handles, sensors, keypads, etc. are "Plug and Play" installation.

A network typically consists of several rack units, enclosed modules, or DIN rail mounted modules "daisy-chained" together. Because the EMKA system is modular it is easy to expand.

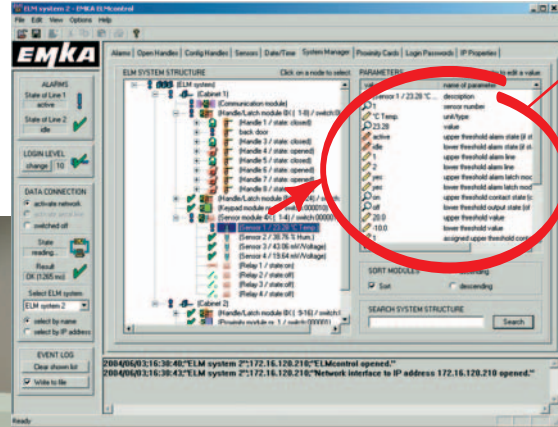
## ELMcontrol



### Benefits:

- Easy to expand
- Network compatible
- "Plug and Play"
- 19" rack compatible
- Each system operates up to 512 handles/latches or up to 256 sensors/contacts.
- Software makes configuration, control and monitoring easy.
- Passive monitoring with ELMwatcher software.
- SNMP-Interface for integration in third party SNMP management systems.

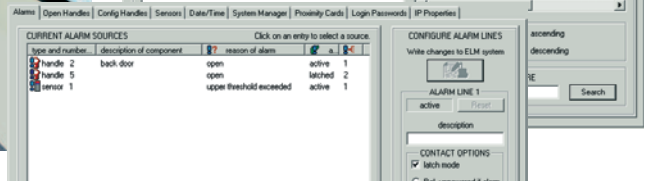
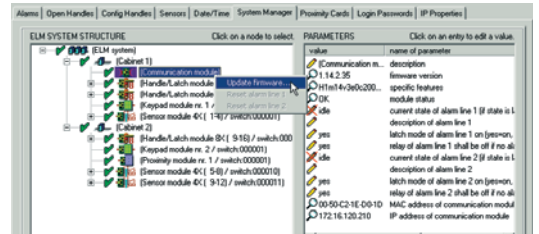
# ELMcontrol Software



Simple administration of module parameters

Screenshot System Manager

Quick up-date of firmware



The forced intrusion alarm adds another level of security

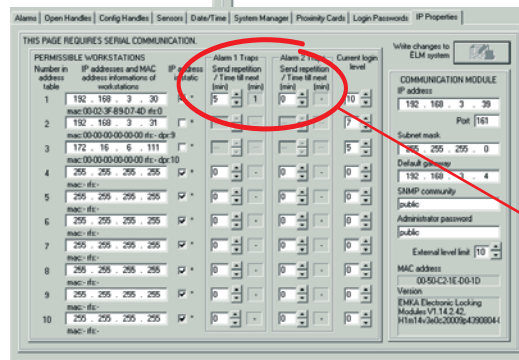
Alarm traps can be set to alert multiple people on the LAN, over the internet, by e-mail or cell phone

Master screen network management

The SNMP Manager ELMcontrol allows easy configuration, control and monitoring of the Electronic Locking System on a PC with Microsoft Windows® operating systems.

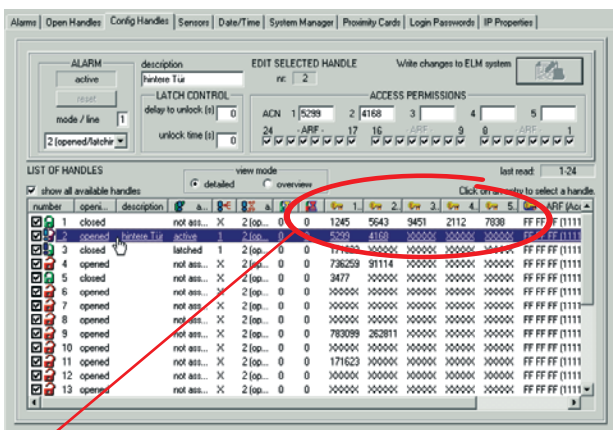
All network components are shown in several structured views and lists. The status of each handle and sensor is shown in real time. Intuitive symbols allow "at-a-glance" monitoring; text or bar graphs give details. Commands can be executed, e.g. opening a door. Events are displayed and written to a log file.

Several systems can be operated and managed from one terminal. Communication with the system can

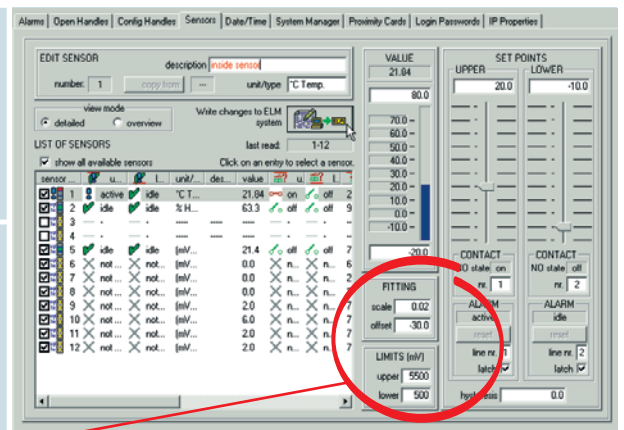


be via Ethernet, serial cable/USB connection or over the internet.

Management of access authorization



Management of sensors and contacts



Different codes and groups can be set up for every single lock

Easy use and integration of sensors supplied by the customer!



# EMKA Niederlassungen



EMKA Beschlagteile Ges.m.b.H.  
Intercity Park 4  
A - 2421 Kittsee • Austria  
Tel.: +43-2143-43063  
Fax: +43-2143-43064  
info@EMKA-beschlagteile.at • www.EMKA-beschlagteile.at



EMKA France SA  
Route des Roches - B.P. 12  
41400 Bourré • France  
Tel.: +33/254/320862  
Fax: +33/254/324598  
EMKA@EMKA-france.com • www.EMKA-france.com



EMKA-Polska Sp. z o.o.  
ul. Siemonska 11  
42-503 Bedzin • Poland  
Tel.: +48/32/3606026  
Fax: +48/32/2633739  
info@EMKA.net • www.EMKA.net



Belgium • EMKA Benelux B.V.  
Marconiweg 2  
5466 AS Veghel • Netherlands  
Tel.: +31/413/323510  
Fax: +31/413/354425  
info@EMKA.org • www.EMKA.org



EMKA Hellas  
47-49 Hatzikiakou Ave  
185-38 Piraeus • Greece  
Tel.: +30/21041/83000  
Fax: +30/21041/83183  
info@EMKA-hellas.com • www.EMKA-hellas.com



EMKA Ferragens Portuguesa Lda.  
Rua Francisco Romero, 65  
Amoreira  
2645- 197 Alcabideche • Portugal  
Tel.: +351/214663355  
Fax: +351/214670475  
mail@EMKA.pt • www.EMKA.pt



EMKA Bosnia d.o.o. Goražde  
Ibrahima Popovica 32  
73000 Goražde • Bosnia-Herzegovina  
Tel.: +387/38/241310  
Fax: +387/38/221474  
info@EMKA.ba • www.EMKA.ba



EMKA Beschlagteile  
Kereskedelmi Képviselet / Kresz Géza u. 51.  
H-1132 Budapest • Hungary  
Tel.: +36/1/2360032  
Fax: +36/1/4510327  
info@EMKA.hu • www.EMKA.hu



S. C. EMKA Beschlagteile S. R. L.  
Alba Iulila 110  
550052 Sibiu • Romania  
Tel.: +40/269/222700  
Fax: +40/369/303700  
info@EMKA.ro • www.EMKA.ro



EMKA Industrial Hardware Co.Ltd.  
No.15 Fuyuan Road  
Wuqing Development Area  
Tianjin, 301700 • China  
Tel.: +86/22/82123759  
Fax: +86/22/82127759  
info@EMKA.cn • www.EMKA.cn



EMKA India Panel Accessories P Ltd.  
No47 J.C. Industrial Estate / 8th Main, Kanakapura Road  
Bangalore-560 062 • India  
Tel.: +91/80/26660212  
Fax: +91/80/26662706  
s.venkat@EMKA.in • www.EMKA.in



Serbia • EMKA Okovi d.o.o.  
Branimirova 64  
HR-35000 Slavonski Brod • Croatia  
Tel.: +385/35/270073  
Fax: +385/35/410900  
p.teglovic@emka-okovi.hr • www.emka-okovi.hr



EMKA Okovi d.o.o.  
Branimirova 64  
HR-35000 Slavonski Brod • Croatia  
Tel.: +385/35/270073  
Fax: +385/35/410900  
p.teglovic@emka-okovi.hr • www.emka-okovi.hr



EMKA Italia S.r.l. Unipersonale  
Via Isidora, 10  
37017 Lazise (Verona) • Italy  
Tel.: +39/045/6471070  
Fax: +39/045/6471126  
info@EMKA.it • www.EMKA.it



EMKA Kovánie  
Máchova 47  
82106 Bratislava • Slovakia  
Tel.: +421/2/45259910  
Fax: +421/2/45259910  
miro.EMKA@ba.telecom.sk



CR • EMKA Kovánie/Beschlagteile für CR a  
Máchova 47  
82106 Bratislava • Slovakia  
Tel.: +421/2/45259910  
Fax: +421/2/45259910  
miro.EMKA@ba.telecom.sk



Montenegro • EMKA Bosnia d.o.o. Goražde  
Ibrahima Popovica 32  
73000 Goražde • Bosnia-Herzegovina  
Tel.: +387/38/241310  
Fax: +387/38/221474  
info@EMKA.ba • www.EMKA.ba



EMKA España S.A.  
C/Físicas, 37  
Poligono Industrial Urtinsa II  
28925 Madrid Alcorcón • Spain  
Tel.: +34/91/6432087  
Fax: +34/91/6434207  
mail@EMKA.es • www.EMKA.es



EMKA Benelux B.V.  
Marconiweg 2  
5466 AS Veghel • Netherlands  
Tel.: +31/413/323510  
Fax: +31/413/354425  
info@EMKA.org • www.EMKA.org





# EMKA Agenturen



Emil Krachten Scandinavia AB  
Industrigatan 10  
55302 Jönköping • Sweden  
Tel.: +46/36/314130  
Fax: +46/36/314131  
info@EMKA.se • www.EMKA.se



EMKA Beschlagteile AG  
Kammistr. 5  
3800 Interlaken • Switzerland  
Tel.: +41/33/8260220  
Fax: +41/33/8260229  
info@EMKA.ch • www.EMKA.ch



EMKA Kilit Sistemleri Metal San. ve Tic. Ltd. Sti.  
Büyükbakkalköy Mahallesi Samandira Caddesi No:6/A  
34858 Maltepe - Istanbul • Turkey  
Tel.: +90/216/5617801  
Fax: +90/216/5617803  
info@emkakilid.com.tr • www.emkakilid.com.tr



EMKA Middle East LLC  
Member of the EMKA Group  
P.O. Box 36293  
Dubai - United Arab Emirates  
Tel.: +971/42844528  
Fax: +971/42844572  
info@EMKA.ae • www.EMKA.ae



EMKA (UK) Ltd.  
Patricia House  
Bodmin Road  
Coventry CV2 5DG • United Kingdom  
Tel.: +44/2476/616505  
Fax: +44/2476/612837  
enquiry@EMKA.co.uk • www.EMKA.co.uk



EMKA Inc.  
1961 Fulling Mill Road  
Middletown PA 17057 • USA  
Tel.: +1/717/9861111  
Fax: +1/717/9861080  
EMKA@emkausa.com  
www.emkausa.com



Lock Focus Pty. Ltd.  
Victoria 3173 • Australia  
Tel.: +61/3/97981322  
locks@lockfocus.com.au



UES (INT'L) PTY. LTD.  
Bella Vista NSW 2153 • Australia  
Tel.: +61/2/88871200  
export@uesint.com



Normont Industrial Hardware, Canada Ltd.  
Laval (Québec) H7P 6A9 • Canada  
Tel.: +1/450/6812884  
EMKA@normont.com



Comercializadora Becor S.A.  
Bogota • Colombia  
Tel.: +57/1/2350234  
gerencia@becor.com



A/S Megatrade Beslag  
2650 Hvidovre • Denmark  
Tel.: +45/44916700  
mega@megatrade.dk



Colly Components AB - Estonia  
164 94 Kista • Sweden  
Tel.: +46/8/7030100  
customerccp@colly.se



Oy Colly Company Ab  
00391 Helsinki • Finland  
Tel.: +358/29/006150  
sales@colly.fi



Teder Electro Mechanical  
49277 Petach-Tikva • Israel  
Tel.: +972/73/2331200  
sales@teder.com



TOCHIGIYA Co., LTD  
101-0047 Saitama • Japan  
Tel.: +81/48/2283072  
support@tochigiya.co.jp



Colly Components AB - Latvia  
164 94 Kista • Sweden  
Tel.: +46/8/7030100  
customerccp@colly.se



Colly Components AB - Lithuania  
164 94 Kista • Sweden  
Tel.: +46/8/7030100  
customerccp@colly.se



Colly AS  
1314 Vöyenga • Norway  
Tel.: +40/21/2329502  
dragos.butoi@dcb.ro



OOO"MK-Electro  
196128 St.-Petersburg • Russia  
Tel.: +7/81/24492928  
info@mk-electro.ru



VF Fastening Systems PTE Ltd.  
757695 Singapore • Singapore  
Tel.: +65/675/2333  
vincent@vffastening.com.sg



Enclosure Solutions  
Benoni • South Africa  
Tel.: +27/11/4212675  
info@enclosuresolutions.co.za



Geo Jeon Co. Ltd.  
429-450 Kyoung Gi Do • South Korea  
Tel.: +82/314/335508  
koreaemka@naver.com



Colly Components AB  
164 94 Kista • Sweden  
Tel.: +46/8/7030100  
customerccp@colly.se



Best Port Company Ltd.  
429-450 Kyoung Gi Do • Thailand  
Tel.: +66/2/993/5739  
bestport@samartas.com



Terramar Engineering and Machinery (Pte.) Ltd.  
Tan Binh District, Ho Chi Minh City • Vietnam  
Tel.: +84/8/9974089  
cam@terramar.com

